

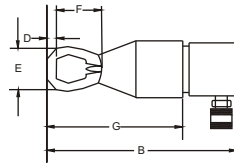
TRISTAR HYDRAULIC NUT SPLITTERS



* tools with perfection

TRISTAR Nut Splitter is supplied Complete with:

- ▶ Hydraulic Cylinder
- ▶ Housing
- ▶ Chisel
- ▶ Set of Allen Keys
- ▶ Spacer Set
- ▶ Packed in a Rugged Steel Tool Box.



Model	Stud Diameter in (mm)	Nut A/F in(mm)	A in(mm)	B in(mm)	C in(mm)	D in(mm)	E in(mm)	F in(mm)	G in(mm)	Weight lb(kg)
STANDARD										
TAS 5	1/4"-1/2" (6-12)	3/8"-7/8" (10-19)	7/8" (20)	5.1/8" (130)	2" (52)	3/8" (8)	1.7/8" (40)	1.1/8" (30)	3.1/2" (85)	2.2 (1)
TAS 10	1/2"-5/8" (12-16)	7/8"-1" (19-24)	1" (24)	6.1/5" (163)	2.3/5" (67)	1/2" (12)	2.1/8" (54)	1.7/8" (41)	4" (100)	4.41 (2)
TAS 15	5/8"-7/8" (16-22)	1"-1.3/8" (24-32)	1.1/8" (30)	7.1/2" (187)	3.2/8" (79)	1/2" (13)	2.3/8" (64)	2.1/8" (52)	5.1/8" (130)	6.6 (3)
TAS 20	7/8"- 1.1/8" (22-27)	1.3/8"-1.3/5" (32-41)	1.3/5" (37)	8.3/4" (219)	3.3/4" (94)	7/8" (20)	3.2/8" (78)	2.3/5" (69)	6.2/8" (158)	9.92 (4.5)
TAS 35	1.1/8"- 1.3/8" (27-33)	1.3/5"-2" (41-50)	1.7/8" (45)	10.1/2" (265)	4.1/2" (113)	7/8" (21)	3.3/4" (95)	3.2/8" (78)	7.1/2" (188)	21.1 (9.6)
TAS 50	1.3/8"-1.3/5" (33-39)	2"- 2.3/8" (50-60)	2.1/8" (54)	11.3/4" (297)	5" (128)	1" (25)	4.2/8" (106)	3.3/4" (91)	8" (201)	28.6 (13)
TAS 90	1.3/5"-1.7/8" (39-48)	2.3/8" - 3" (60-75)	3" (75)	14.1/2" (357)	7.3/8" (185)	1.1/32" (27)	6.2/8" (156)	4.1/2" (110)	5" (225)	74.95 (34)
TAS 308	1.3/4"-2.1/4" (45-57)	2.3/4"-3.1/2" (70-89)	3" (77.8)	17.75" (450.8)	7.125" (184.2)	0.875" (19)	5.75" (146)	6.375" (161.92)	13.25" (336.55)	95 (43.2)
TAS 314	2"-2.1/2" (50-64)	3.1/8"-3.7/8" (79-98)	3.125" (79.4)	18" (457.2)	7.125" (184.2)	0.875" (22.2)	6.25" (158.75)	6.064" (154)	13.75" (349.25)	100 (45.4)
TAS 404	2.1/2"-2.3/4" (64-70)	3.3/4"-4.1/4" (95-108)	3.75" (95.3)	22.75" (577.9)	9.875" (250.8)	1.125" (28.6)	7.5" (190.5)	7.21" (183.13)	-	205 (93.2)
TAS 500	3"-3.1/4" (76-83)	4.1/2"-5" (114-127)	4.125" (104.8)	23" (584.2)	9.875" (250.8)	1.125" (28.6)	9" (228.6)	7.235" (183.7)	-	210 (95.4)
TAS 506	3.1/4"-3.1/2" (83-89)	4.7/8"-5.3/8" (124-136)	4.125" (104.8)	23.5" (596.9)	9.875" (250.8)	1.125" (28.6)	9.375" (238.13)	7.539" (191.4)	-	215 (97.7)
TAS 608	3.3/4"-4.1/4" (95-108)	5.3/4"-6.1/2" (146-165)	5" (127)	24" (610)	12.5" (317.5)	1.406" (28.6)	11.72" (297.6)	9.424" (239.37)	-	215 (97.7)